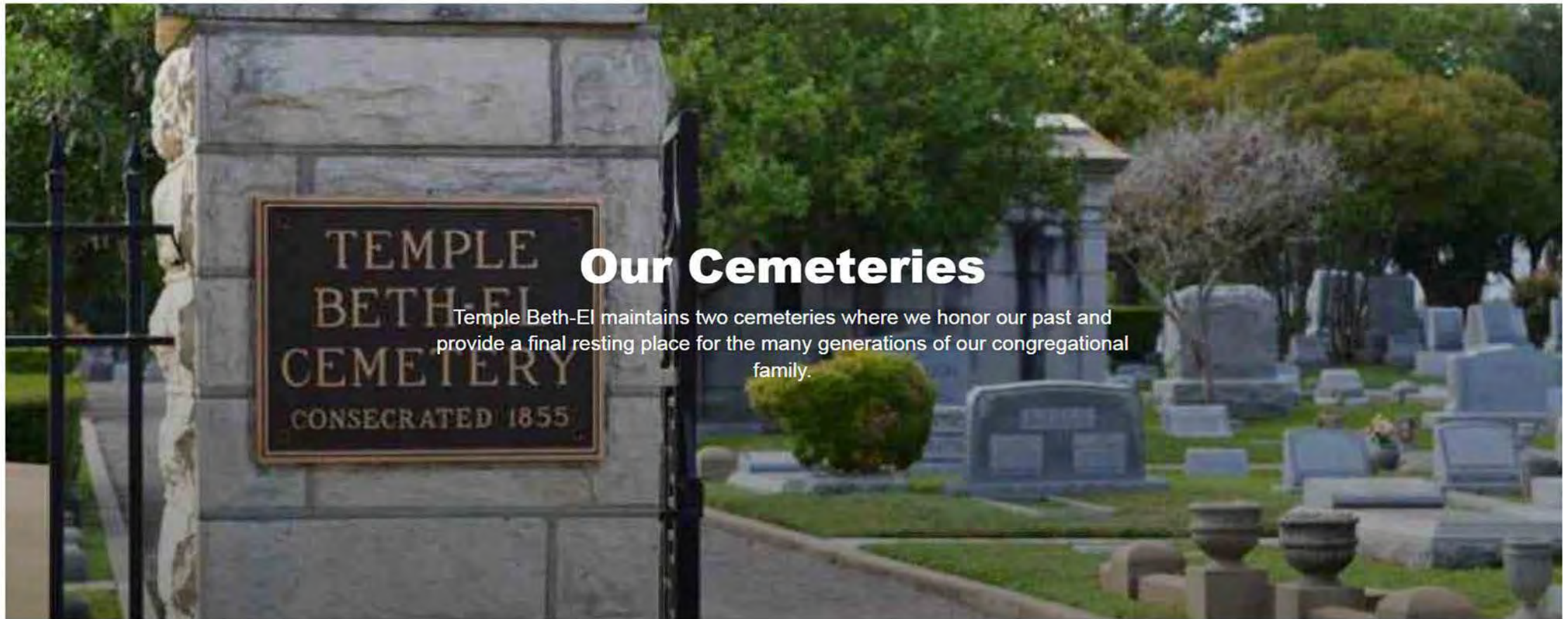




Temple Beth-El Memorial Park

Long-Term Master Plan &
Proposed Phase One
Development Plan
Improvements

Honoring Our Past. Securing Our Future.



Our Cemeteries

Temple Beth-El maintains two cemeteries where we honor our past and provide a final resting place for the many generations of our congregational family.



Honoring Our Past,
Securing Our Future

Cemetery Renovation Committee

Amy Benedikt, M.D. | J. Russell Davis, *Chair*
Mark Eichelbaum, *President* | Rabbi Mara Nathan, *Senior Rabbi*
David Palans | Alan Petlin | Richard Planto
Honorary Chair: Melvin Cohen, M.D.





Temple Beth-El Memorial Park



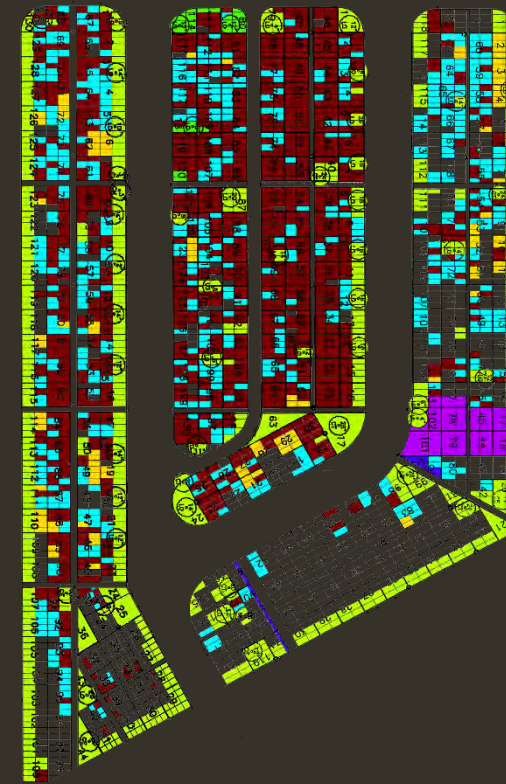
Existing Memorial Park

Total Existing plots = approximately 2,420

Available plots = approximately 860



Temple
Beth El
Memorial
Park



- Occupied
- Purchased
- Reserved for Future Roadway Extension
- Reserved for Vegetation
- First Right of Refusal
- Available

Approximately
860 plots (26 years)



Existing Conditions

Immediate Concerns



Immediate Concerns

Settling

- Uneven Monuments and Headstones





Immediate Concerns

Sidewalks

- Settlement
- Uneven surfaces
- Non-compliant with ADA



General Concerns

Aesthetics

- Cracked Pavement & Curbs
- Understated Entry & Signage/Entry Gate
- Aged & High Maintenance Planting





General Concerns

Lack of Amenities

Seating & Shelter

- Insufficient

Proposed Long-Term Master Plan

Proposed Long-Term Master Plan

Improved Drainage

Regrade and Re-set Headstones and Markers

New Roadways

New Sidewalks

Landscape Upgrades

New Pavilion & Seating

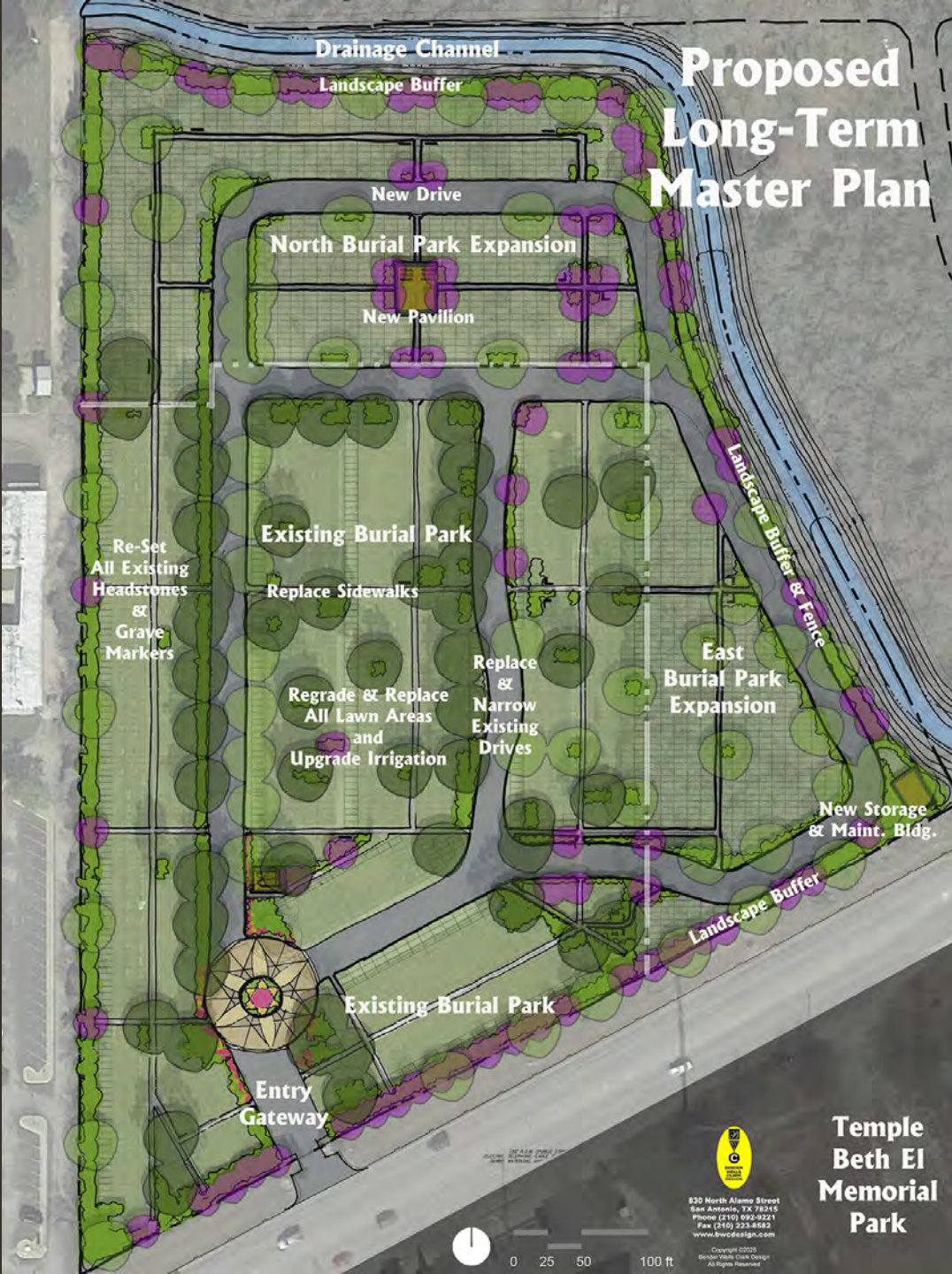
Columbarium

New Security & Fencing

New Gateway & Streetscape

Significant Burial Park Expansion

(Over 2,000 Additional Plots-
Extending capacity to 70 – 80 years)



Phase One Development Plan

Improved Drainage

Regrade and Re-set Headstones and Markers

New Sidewalks

Landscape Upgrades

New Pavilion & Seating

Columbarium

New Security & Fencing

New Gateway & Streetscape

Limited Burial Park Expansion

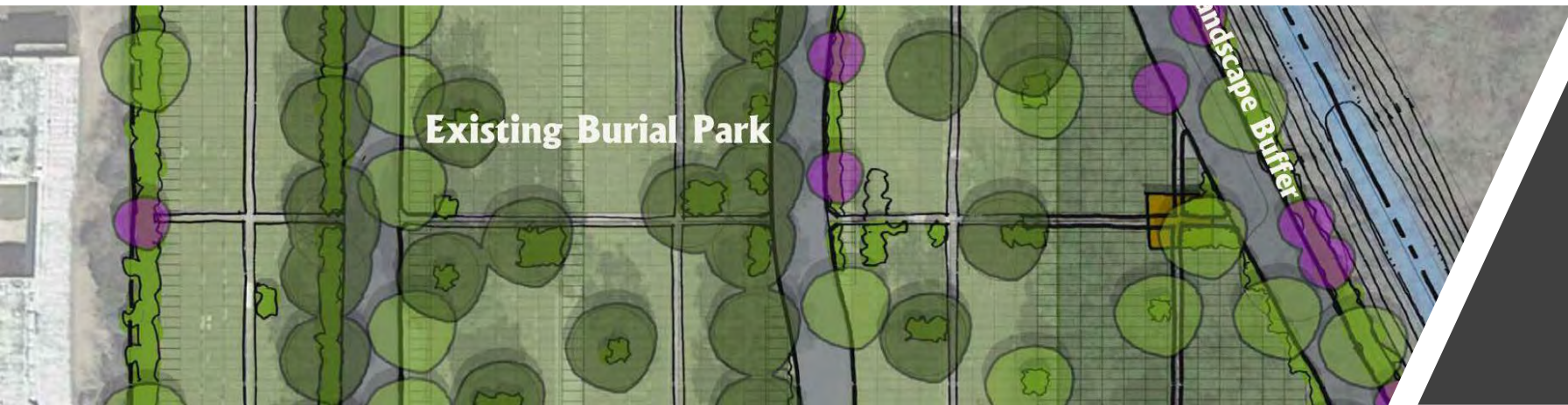
(Approx. 460 Additional Plots, extending capacity to 35 - 40 years)





Future Improvements

Immediate and General Solutions





Immediate Solutions

Security

- Pre-emptive measures:
Cameras, Enhanced Fencing
& Gates

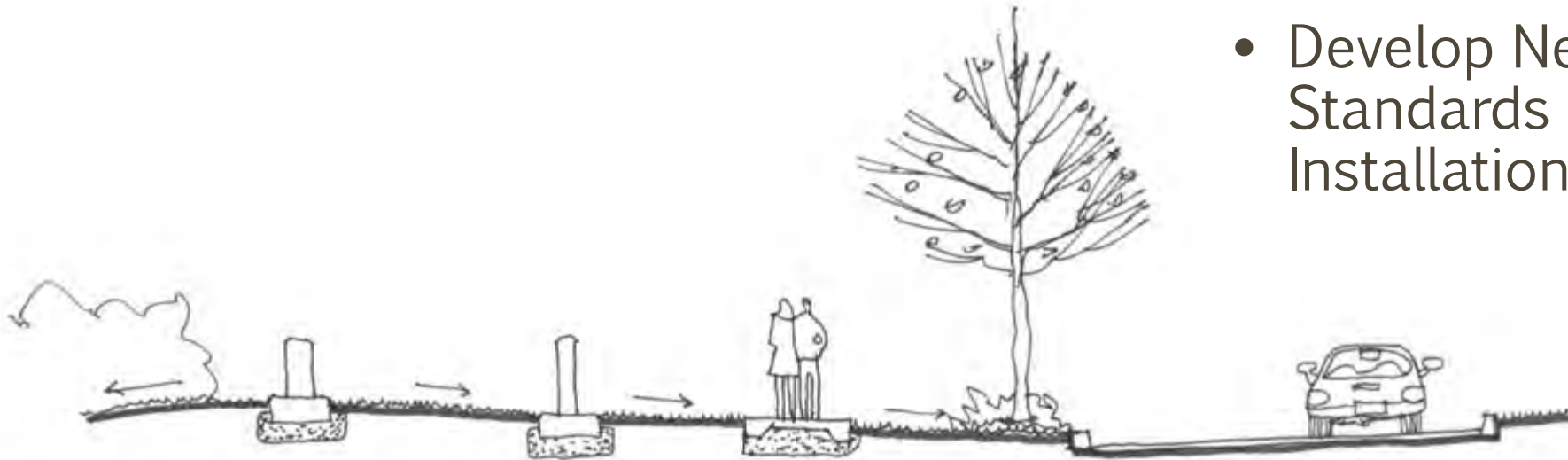
Immediate Solutions

Improve Access & Drainage

- Raise and Level All Sidewalks

Correct & Reduce Settling

- Re-Set All Existing Monuments & Headstones with Foundations
- Develop New Foundation Standards for Future Installations





Immediate Solutions

Seating & Shelter

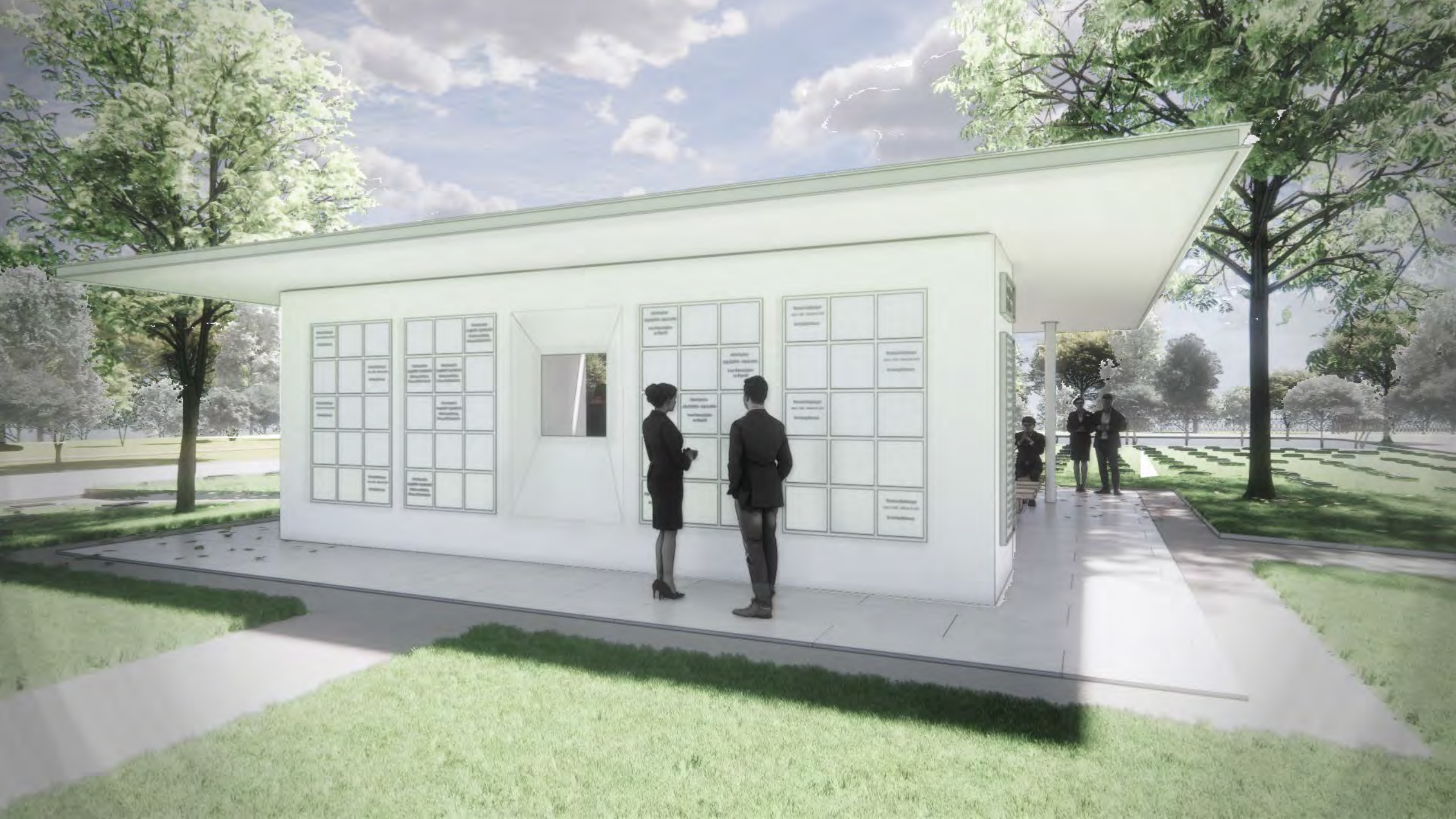
- New Pavilion



Preliminary Concepts Pavilion

Designs of structures are preliminary and will be subject to further design development and refinement.









Goals & Objectives for Phase One

- Serene & Calm Setting
- Park-like
- Comfortable
- Enhanced Security
- Well Maintained
- Sustainable
- Endowed Perpetual Maintenance

Honoring Our Past. Securing Our Future.



- Deferred Maintenance & Upgrades
- Future Expansion Areas Established with Native Grass
- Headstones & Markers Re-set
- Construction Costs & Soft Costs

- Grand Total for Phase One Development \$3.5 to \$4 million

Campaign Objectives:

Your gift will assure the long-term sustainability of the Temple Beth-El Cemeteries for generations to come.

L'dor Vador לדור ודור

- Fund Site Development Costs
 - Dedicated Funded Endowment Sufficient to Sustain Austin Highway and Palmetto Cemeteries in Perpetuity
 - Increase Available Cemetery Plots
 - Projected Extend Life of Cemetery
 - 35-40 Years for Phase One
 - Up to 80 Years Upon Completion of All Phases of Master Plan
-
- Campaign Goal \$4.5 million